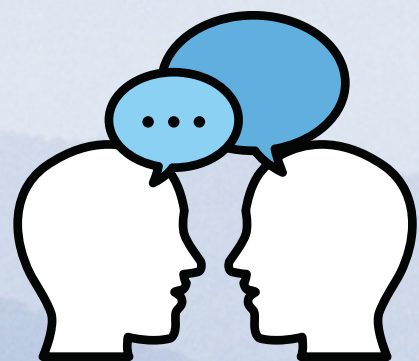


UNIVERSITY COLLEGE

Why should you consider joining a **learning community**?

1. Courses attached to the learning community often work towards the completion of one's major
2. Students within the same community often take the same course(s) and can work together
3. Building academic and personal connections with peers, faculty, and staff at Albany State University
4. Exploring and defining personal values and identity within a community
5. Making new friends, having fun, and learning at the same time



Join **ONE** of these **EXCITING** Learning Communities this Fall:

- **BSN Pre-nursing Learning Community**
 - Who's Eligible? Great for first-year Pre-nursing Bachelor of Science majors
- **ASN Pre-nursing Learning Community**
 - Who's Eligible? Great for first-year Pre-nursing Associate of Science majors
- **Future Teachers Program Admission**
 - Who's Eligible? Great for first-year Pre-education majors
- **Being an Avatar in a Metaverse**
 - Who's Eligible? Great for first-year male students, open to any major
- **Speaking the Language of Criminal Justice**
 - Who's Eligible? Great for first-year Criminal Justice majors
- **Conversations about STEM**
 - Who's Eligible? Open to all first-year STEM majors
- **Embracing Global Commerce**
 - Who's Eligible? Great for first-year Business majors
- **The Impact of Music through History**
 - Who's Eligible? Summer Success Academy participants, open to any major
- **The American Dream**
 - Who's Eligible? Great for first-year Social Science majors

Applying to join a learning community is an additional separate application from the general admissions application process at Albany State University. Students interested in joining one of the communities must be admitted and enrolled in courses at ASU.

Contact universitycollege@asurams.edu or (229) 500-2003 for more information.